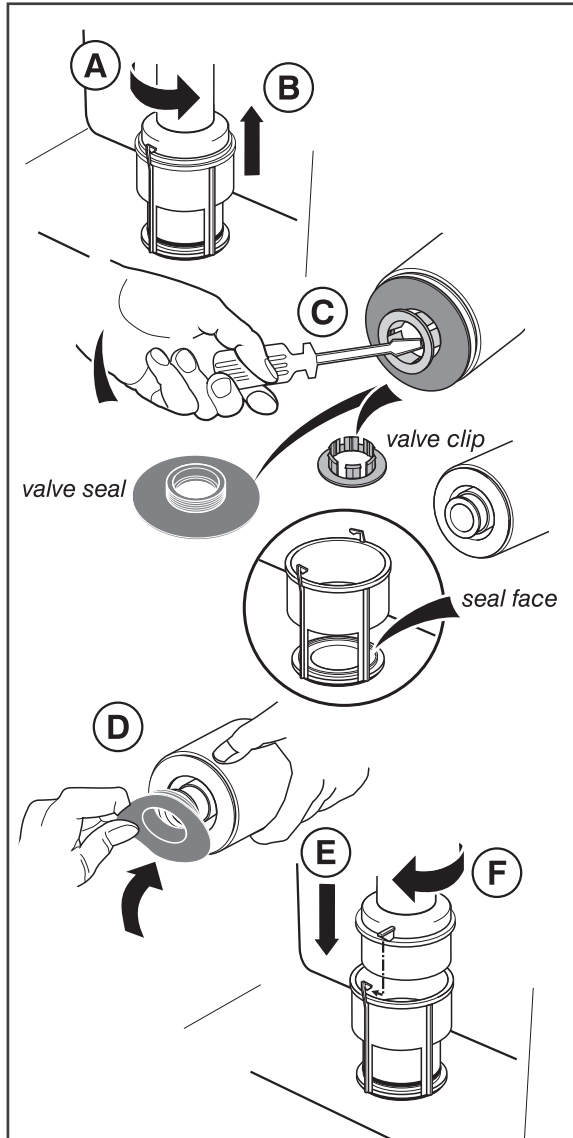


LEAVE WITH USER FOR REFERENCE

Cistern Outlet Valve Maintenance Procedure

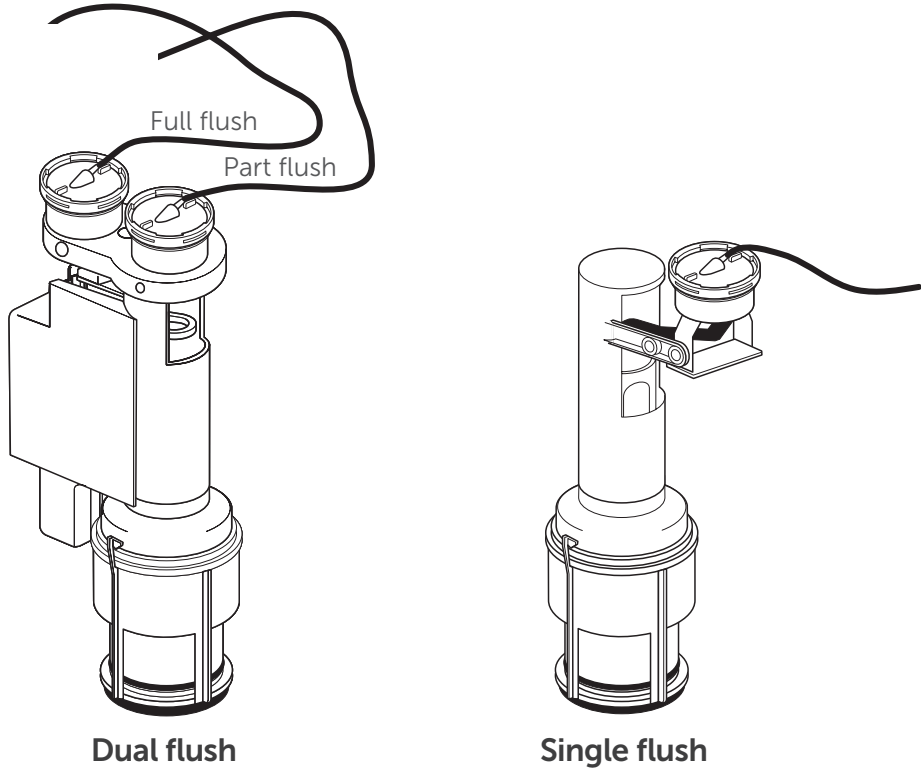
The cistern outlet valve should be checked and the seal cleaned periodically



1. Turn off the water supply to the cistern and flush.
2. Close toilet seat and lid.
3. Remove cistern lid.
4. Remove valve body by gripping and turning anti-clockwise to unlock. Apply downward pressure whilst turning valve, (to prevent clips breaking). Lifting the valve body exposes the valve seal, (A B).
5. Inspect and clean valve seal.
6. If necessary replace valve seal by removing the retaining clip and removing the retaining clip and inserting screwdriver down centre hole as shown, (C D).
7. Check condition of seal face, remove any obstruction.
8. Refitting the valve is reversal of removal, taking care to locate the tabs of the valve body into the lugs of the valve seat, (E F).
9. Re-fit cistern lid and turn on the water. Re-fill cistern, test flush and sealing.
10. Quote reference SV01967 to purchase a replacement seal.
11. To order electronically go to website www.fastpart-spares.co.uk.

Waterproof sealant **MUST NOT BE USED** to seal, as this will have a detrimental effect on all submerged rubber seals.

Freeflow Outlet Valve



Follow valve removal and replacement described on previous page. Push fit pneumatic tubes on to outlet valve and flushplate or button. Ensure this is tight and tubing is free from kinks and trappings. Replacement tubing is available seperatley - SV31667

All system components must be installed in accordance with UK water regulations. If in doubt a suitably qualified person should be consulted.
We pursue a policy of continuing improvement in design and performance of our products. The right is, therefore, reserved to vary specifications without notice.

Ideal Standard UK Ltd., The Bathroom Works, National Avenue, Hull, HU5 4HS

EEM3448167
4814

ver. 2.0/07.22